

SALK NEIGHBORHOOD PARK & JOINT USE DEVELOPMENT

Workshop 4
August 8, 2017



Michael Baker
INTERNATIONAL

AGENDA

- Introductions
- General Development Plan Process and Schedule
- Project Site
- Guiding Design Principles
- Schematic Design Alternatives Summary
- General Development Plan
- Salk Neighborhood Park
- Maddox Neighborhood Park
- Next Steps

GENERAL DEVELOPMENT PLAN PROCESS & SCHEDULE

Introductory Community Workshop

- March 8, 2016

Community Workshop #1

- Opportunities & Constraints Plan
- Community Input
- Design Charrette

- August 9, 2016

Community Workshop #2

- Workshop #1 Summary
- Rest Room Facility

- March 14, 2017

*Develop
Design
Alternatives*

Community Workshop #3

- Present Schematic Design Alternatives
- Community Input

- May 9, 2017

**Parks &
Recreation
Board
Presentation**

- Winter 2017

**Mira Mesa
Recreation
Council
Committee
Presentation and
Approval**

- August 8, 2017

*City
Review*

*Develop Final
General
Development
Plan*

- July 2017

**City and School
District Input**

- May-June 2017

PROJECT SITE

Joint-Use Areas

- 2.1 Acres of hard court area and parking lot
- 2.0 Acres of play field area

City Park Area

- 4.1 Acres

Maddox Dog Park



GUIDING DESIGN PRINCIPLES

- Create a beautiful space that serves the recreational needs of both the school and the community
- Provides both active and passive recreational opportunities
- Captures scenic views
- Incorporates sustainable design principles
- Connects to Maddox Park to create one large, recreational area
- Connects to regional trail system

SCHEMATIC DESIGN ALTERNATIVES



SCHEMATIC DESIGN ALTERNATIVES SUMMARY

- Prefer passive recreation of Alternative 'B' including:
 - *Amphitheater*
 - *Native Plant Gardens*
 - *Butterfly Garden*
 - *Garden Maze*
 - *Decomposed Granite Trails*
 - *Trailhead*
- Prefer rest room location of Alternative 'B'
- Prefer parking lot and drop-off of Alternative 'A'
- Prefer pedestrian access and dog park design of Alternative 'B'

GENERAL DEVELOPMENT PLAN



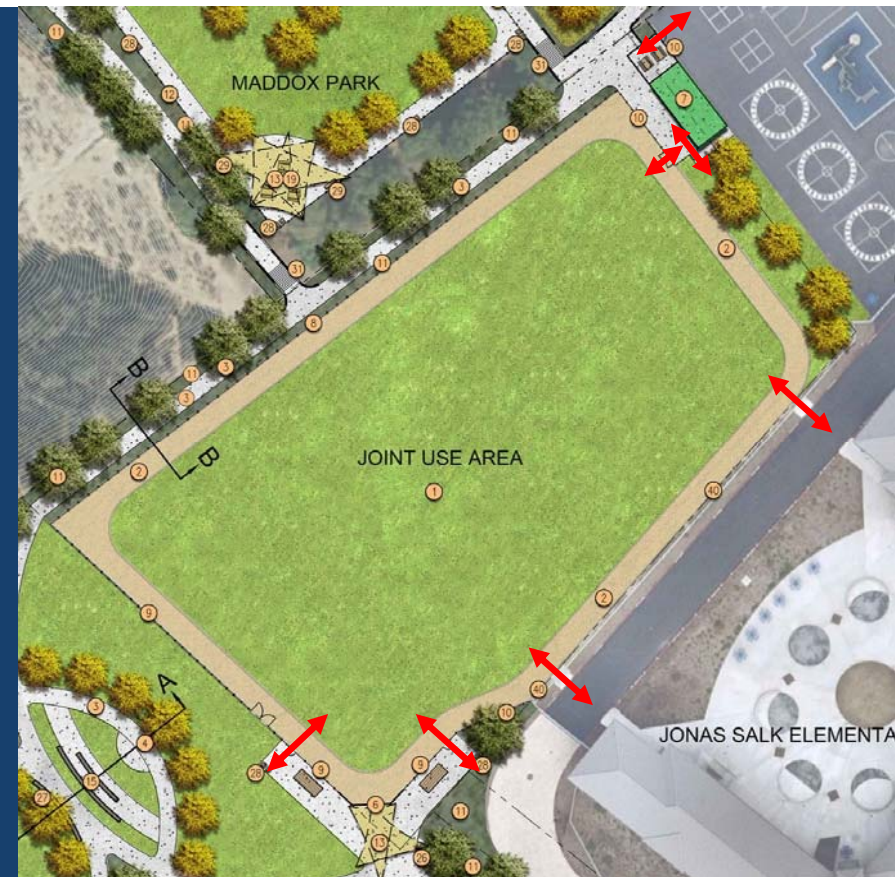
SALK NEIGHBORHOOD PARK



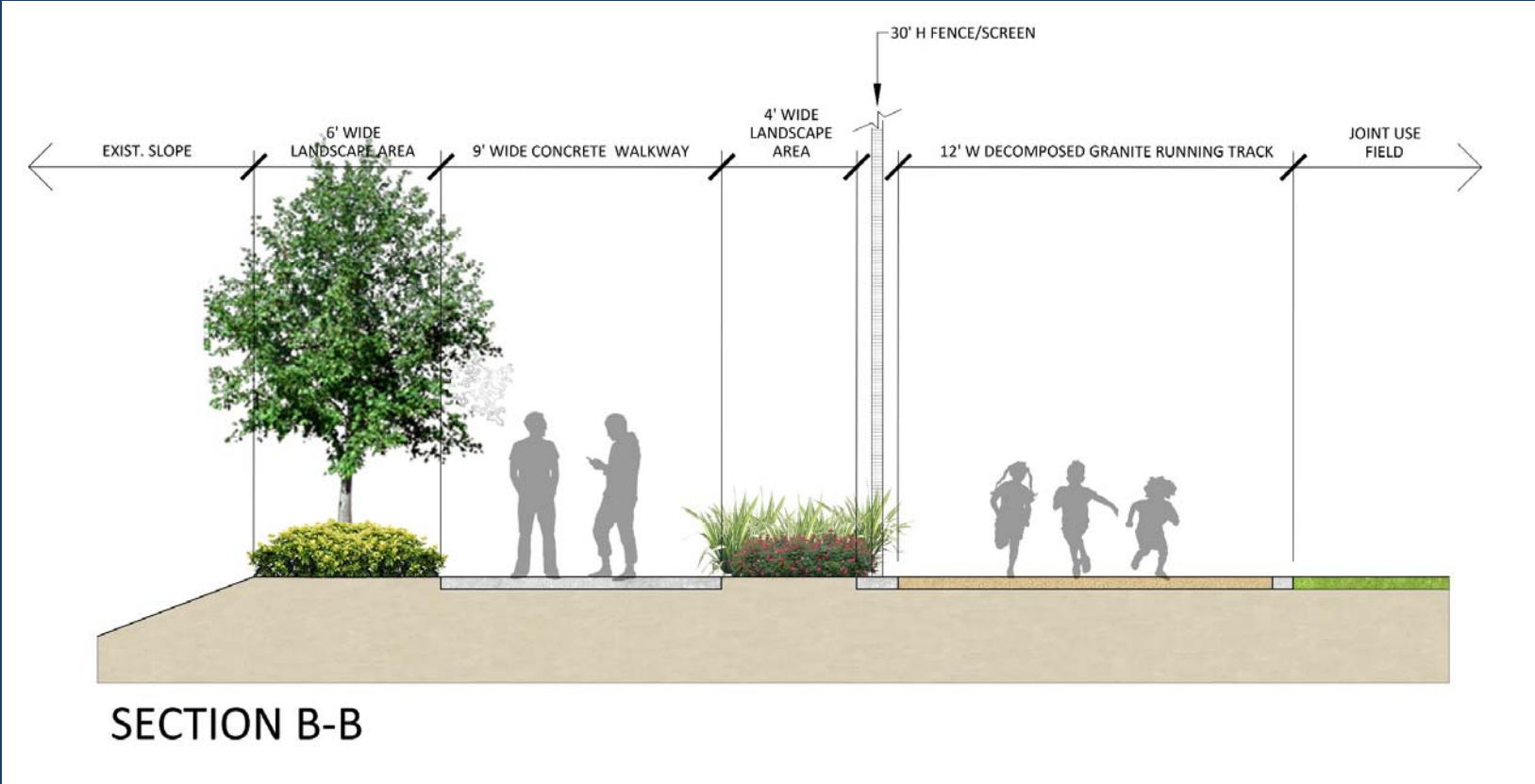
SALK NEIGHBORHOOD PARK

Joint-Use Area

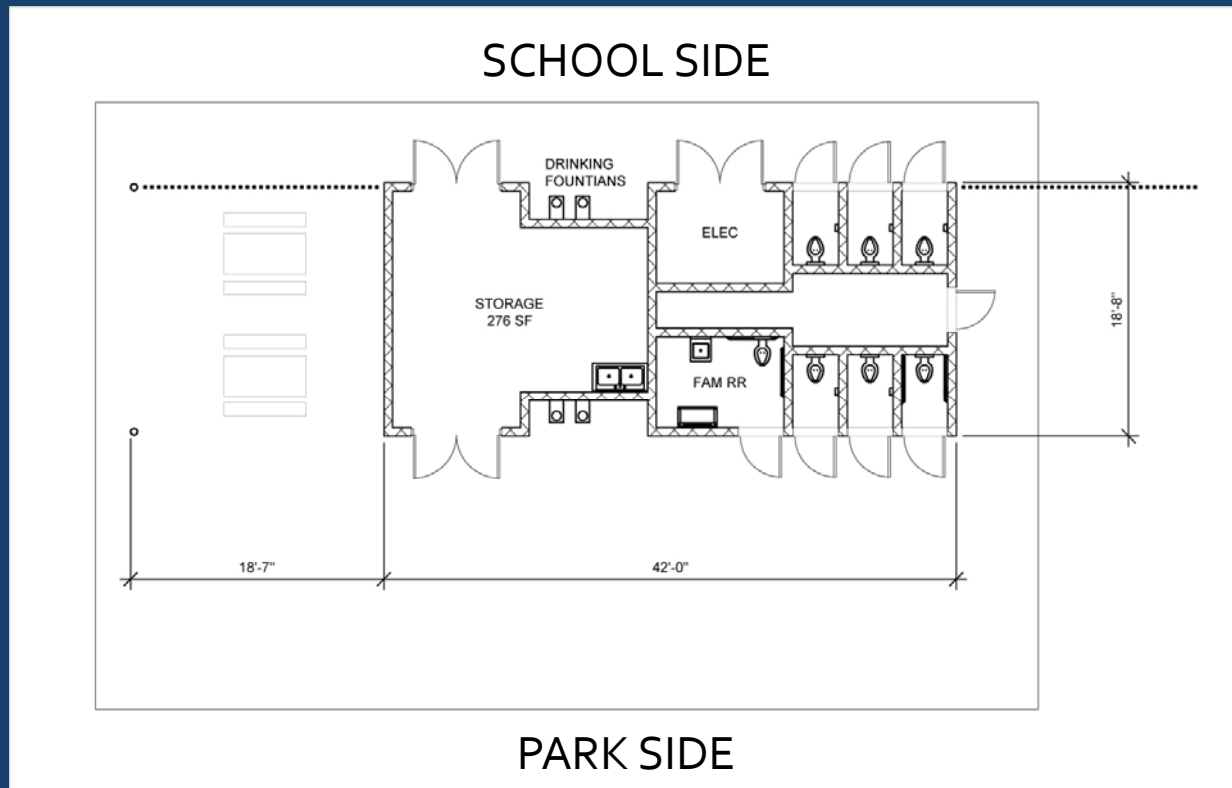
- 2.0 Acres
- Large grass field area
- Shared rest room
- T-Ball backstop
- Running track (1/5th of a mile) of decomposed granite
- Fenced – access controlled by gates



SALK NEIGHBORHOOD PARK



REST ROOM

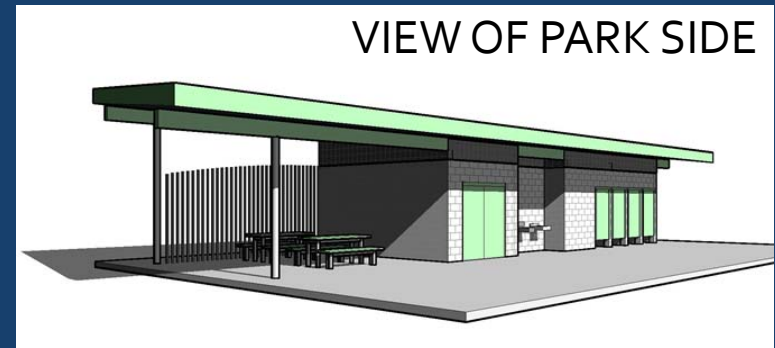


REST ROOM

VIEW OF PARK SIDE



VIEW OF PARK SIDE



VIEW OF SCHOOL SIDE



VIEW OF SCHOOL SIDE



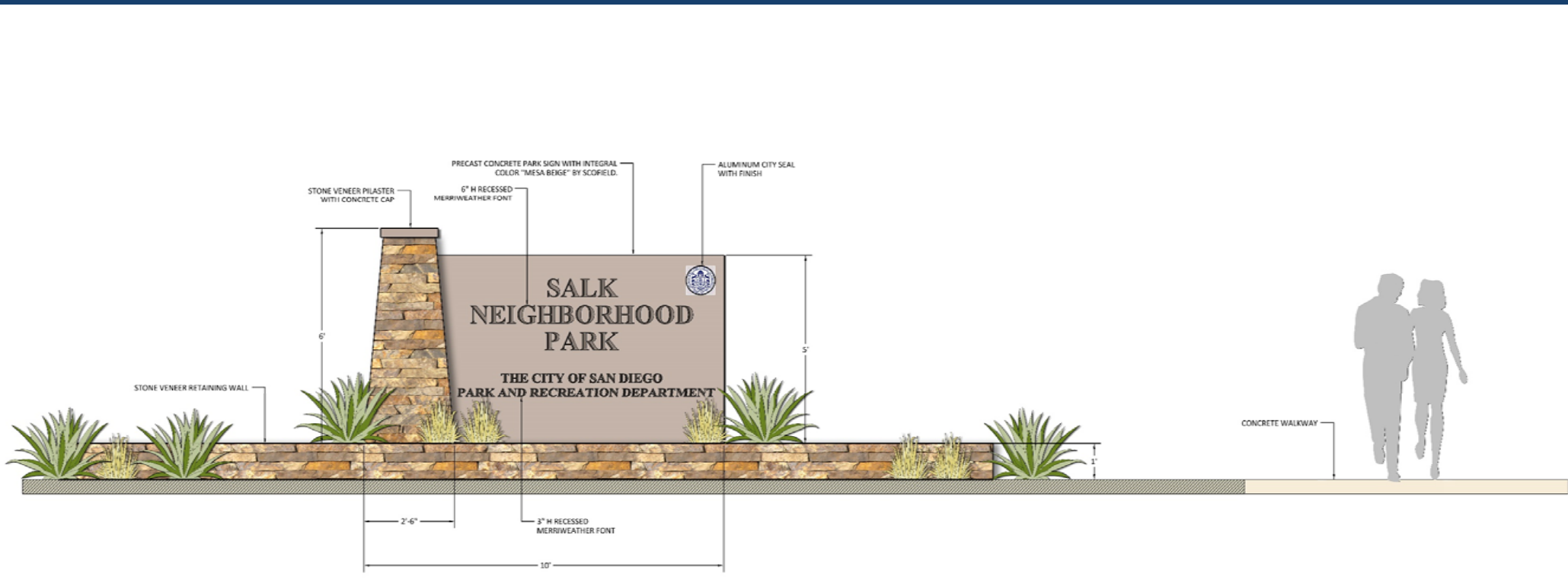
SALK NEIGHBORHOOD PARK

City Park Area

- 4.1 Acres
- Vehicular and pedestrian access from Parkdale Avenue
- Parking lot (41 spaces, 2 ADA spaces)
- Entry monument



SALK NEIGHBORHOOD PARK



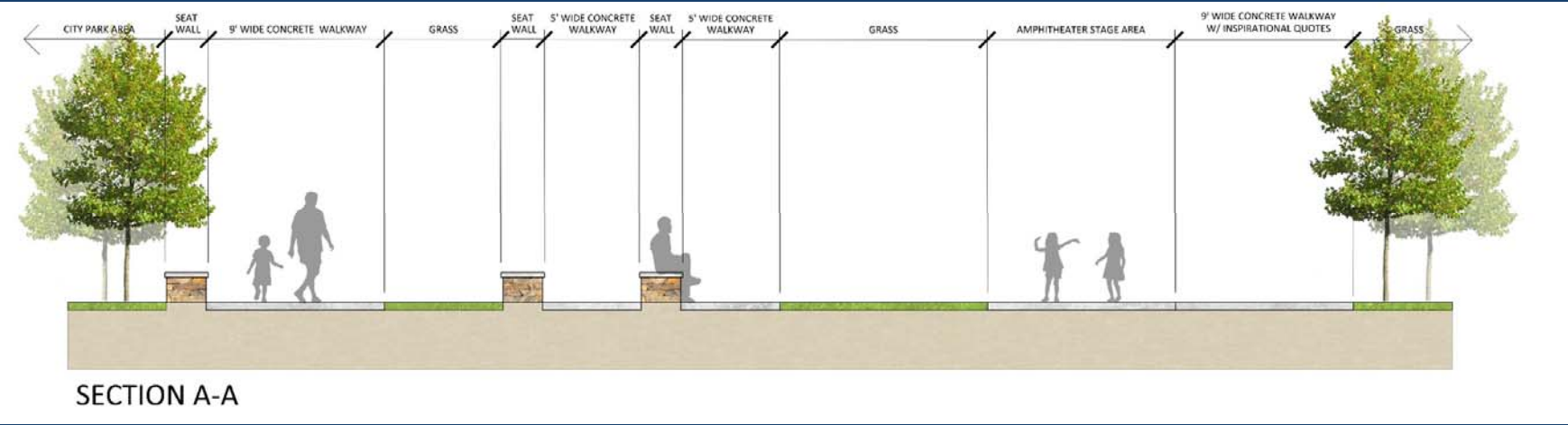
SALK NEIGHBORHOOD PARK

City Park Area

- *Amphitheater / outdoor classroom*



SALK NEIGHBORHOOD PARK



SECTION A-A

SALK NEIGHBORHOOD PARK



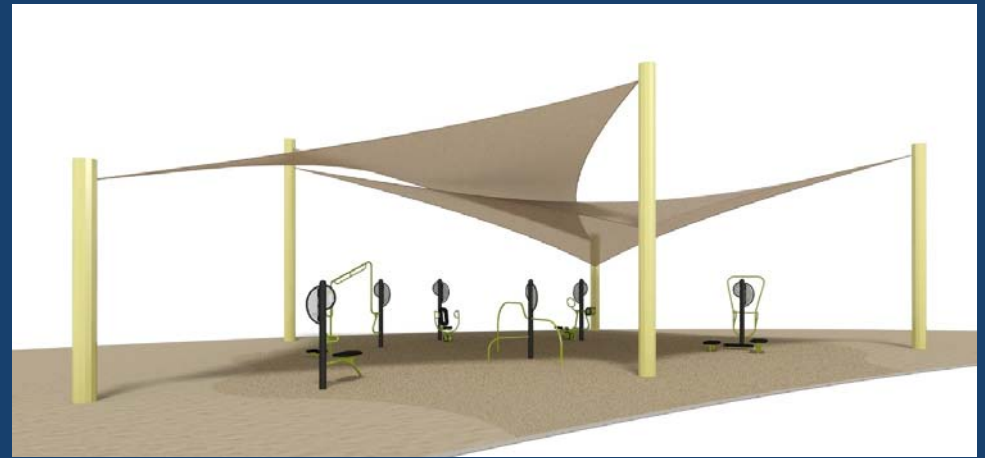
SALK NEIGHBORHOOD PARK

City Park Area

- *Playground*
- *Outdoor exercise equipment*



SALK NEIGHBORHOOD PARK



SALK NEIGHBORHOOD PARK

City Park Area

- *Native gardens*
- *Decomposed granite pathways*
- *Garden art*



SALK NEIGHBORHOOD PARK



SALK NEIGHBORHOOD PARK

City Park Area

- *Seat walls*
- *Benches*
- *Trash and recycling receptacles*
- *Bicycle rack*
- *Drinking Fountain*



SALK NEIGHBORHOOD PARK



SALK NEIGHBORHOOD PARK

City Park Area

- *Picnic area*
- *Butterfly garden*



SALK NEIGHBORHOOD PARK



SALK NEIGHBORHOOD PARK

City Park Area

- *Human sun dial at trailhead connection*
- *Garden maze*



SALK NEIGHBORHOOD PARK



Center of Maze

"It's a matter of being able to find meaning, whether it's positive or negative, in whatever you encounter. It's like a journey. It's like finding the paths that will allow you to go forward, or the paths that has a block that tells you to start over again."

-Jonas Salk 1991

SALK NEIGHBORHOOD PARK



SALK NEIGHBORHOOD PARK

City Park Area

- *Water quality basins*



SALK NEIGHBORHOOD PARK



MADDOX NEIGHBORHOOD PARK

Dog Park Area

- *Pedestrian connections to Flanders Drive*
- *Pedestrian connections to Salk Park with ADA stairs and ramp*
- *Water quality areas*



MADDOX NEIGHBORHOOD PARK

Dog Park Area

- *.15 Acre small dog park*
- *.71 Acre large dog park*
- *Double entry gates*
- *Shade sails*
- *Benches*
- *Picnic tables*
- *Dog drinking fountains*
- *Dog agility equipment*



MADDOX NEIGHBORHOOD PARK



NEXT STEPS

Introductory Community Workshop

• March 8, 2016

Community Workshop #1

- Opportunities &
Constraints Plan
- Community Input
- Design Charrette

• August 9, 2016

Community Workshop #2

- Workshop #1
Summary
- Rest Room Facility

• March 14, 2017

*Develop
Design
Alternatives*

Community Workshop #3

- Present Schematic
Design Alternatives
- Community Input

• May 9, 2017

Parks & Recreation Board Presentation

• Winter 2017

Mira Mesa Recreation Council Committee Presentation and Approval

• August 2017

*City
Review*

*Develop Final
General
Development
Plan*

• July 2017

City and School District Input

• May-June 2017

THANK YOU!



Michael Baker
INTERNATIONAL